



FROM  THE 14<sup>th</sup> TO THE 20<sup>th</sup> JULY **2021**

# CSPACE

*the student space event*

## PARTICIPANT HANDBOOK

**Camp militaire  
de Ger du 1<sup>er</sup> RHP**  
(Régiment de Hussards Parachutistes)



[cnes.fr](https://cnes.fr)





This year, the C'Space takes place at the foot of the Pyrenees, on the military camp from the 1<sup>st</sup> RHP (Régiment de Hussards Para-chutistes) to Ger.

**When you arrive at the site**, you will be given your badge. It must be worn visibly at all times, do not lose it: it can be requested at any time by the 1<sup>st</sup> RHP mili-tary and the organisation inside the site.

**The change to the C'Space reception [2]** is mandatory to check your details and assign the rooms. You will receive a bag containing the paper copy of the participant's booklet, and the documents C" Space needed. Then, follow the arrows that you will lead to the club building [10 -11].

A stand will be assigned to you.

Once unloaded, your car will have to be parked in the Ger camp en-trance parking lot (outside the site). [14] You can also travel by bi-cycle (subject to the traffic regulations) or on foot. Travel to Ger camp is forbidden after 2:00 in the morning. During the day, a **shuttle system, upon registration**, is set up to access the launch area about 3 km away from Base Vie.

Places  
marked [n] are  
to be found on the last  
page of this docu-ment,  
«the base camp ».



Due to the health crisis, you will be accommodated in smaller group and for a shorter period than previous editions.

**A sheet** and a **disposable mattress** cover will be available.

In order to ensure a pleasant stay, please respect the following rules :

- After 10pm, noise levels must be reduced to a minimum.

- Be cooperative and courteous with the CSpace staff, they guarantee your comfort and safety.
- Make sure to leave your room as clean as you found it upon arrival, keep the floor clean and empty the bins.

- **Smoking is strictly prohibited** inside the premises.

Safety instructions are displayed in each building next to the evacuation plans. These instructions need to be adhered to in order to ensure safety of all participants.

[illegible]

	Mardi 20	Mercredi 21	Jeudi 22	Vendredi 23	Samedi 24
	Petit-déjeuner [6h00 - 8h30]				
8h30 - 9h00					
9h00 - 10h00	Contrôle des fusées				
10h00-11h00	Lancement Minif/ Fusex	Contrôle des fusées	Lancement Minif/ Fusex	Repli	Lancement Minif/ Fusex
11h00-12h00					Repli
12h00-13h00	Déjeuner [11h00 - 14h00]				
13h00-14h00					
14h00-15h00	Lancement Fusex	Lancement Fusex	Lancement Fusex	Repli	Repli
15h00-16h00					
16h00-17h00	Contrôle des fusées	Contrôle des fusées	Contrôle des fusées		
17h00-18h00					
18h00-19h00	Dîner [18h00 - 20h30]				
19h00-20h00					
20h00-21h00					
21h00-00h00					Repli
	Ce planning est provisoire, certaines activités peuvent être ajoutées ou remplacées.				



## Health restrictions and requirements

### In order to ensure the safety of all participants, strict measures are required.

Access to the event is conditional on the presentation of a PCR test of less than 48 hours or the presentation of proof of vaccination (complete vaccination schedule, according to the current instructions :

- 2 weeks after the 2nd injection (Pfizer, Moderna, AstraZeneca) ;
- 4 weeks after the injection of (Johnson & Johnson) ;
- 2 weeks after the injection for vaccines in people who already had Covid)

For the duration of the C'Space you are required to strictly apply all barrier gestures. (a distance of **1m** between participant, **regular hand washing, mandatory wearing of the mask, cleaning of the workstation** and all equipment after use).

In case of any symptoms (cough, temperature, loss of smell/taste) please immediately report yourself to the organisers.

### Face au Coronavirus, il existe des gestes simples pour préserver votre santé et celle de votre entourage



Se laver les mains très **régulièrement**



Tousser ou éternuer dans son **coude** ou dans un **mouchoir**



Utiliser un mouchoir à usage **unique** et le jeter



Saluer sans se serrer la main, éviter les embrassades



Porter un **masque**



Respecter au minimum une distance de **1 mètre**

## CANTINE ACCESS

All meals are taken at the Ger camp canteen at the following times:

- **Breakfast: 6.00am-8.30am**
- **Lunch: 12am-2pm**
- **Dinner: 6pm-8.30pm**

Note: No one will be accepted after 8.30pm.

## ARRIVAL & DEPARTURE

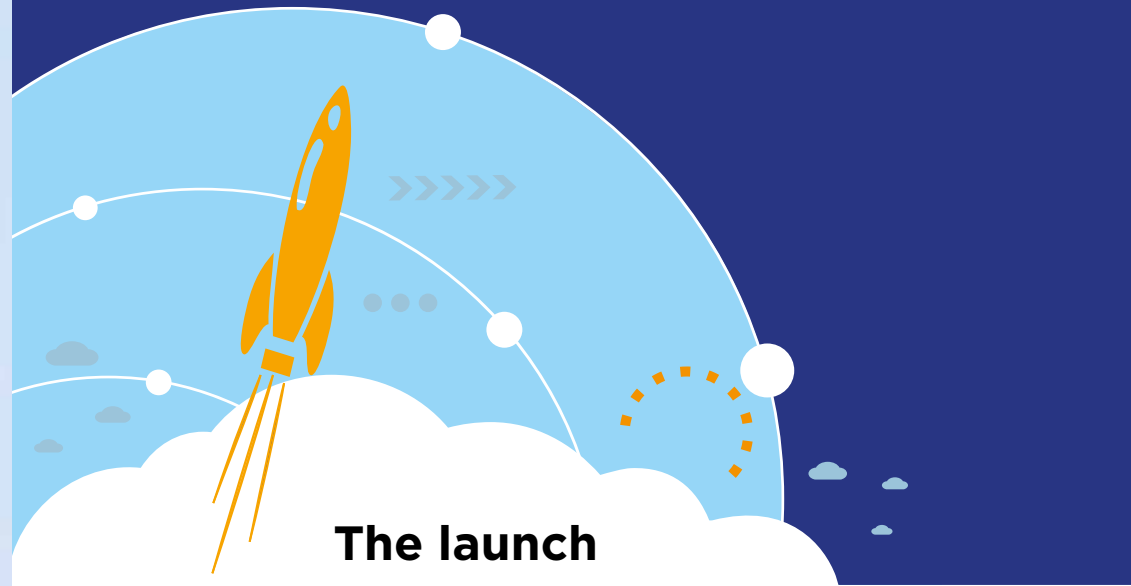
To prepare for your arrival and departure, remember to inquire and register to take advantage of the shuttles to or from Tarbes SNCF train station and the train station. Lourdes/Tarbes airport.

To get to the military camp by car see ("Going to Ger camp") below.

## MAKE THE MOST OF YOUR FREE TIME

Despite the sanitary conditions, the entire CNES team and Planète Sciences volunteers will be keen to exchange ideas and accompany you throughout the event! Do not hesitate to contact them.

6



## The launch area

The launch area, located about 3 km from the base camp, is accessible by shuttle, and also with the "club car" on the day of your team's launch.

Rocket launches take place from Monday afternoon to Friday morning (unless there is severe weather). **The flight schedule is based on qualifying order.** It is important to note that the last qualified teams may not be able to launch if every other launch window is already taken, especially in the case of bad weather.

**Remember to wear a hat and to protect your skin with sunscreen.**

## BEWARE

In the launch area different risk zones are identified. For each area, respect the safety instructions given by the operational teams.

Lighters, or other objects that generate fire or heat, as well as **mobile phones (even turned off) must be left in the club tent** in a box provided for this purpose before entering the pyrotechnic zone.

The recovery of rockets will take place after the last launch window (depending on time and weather), with at least one person from the operations team.

7



# Safety instructions

## PREVENTIVE ACTIONS AGAINST FIRE

### To facilitate evacuation

- Exits must remain free of all objects, equipment and furniture.
- Space between beds must remain free of all objects (such as chairs and tables or other furniture).
- Smoking or the use of electronic cigarettes is strictly prohibited in all buildings.
- Be careful with electrical appliances, use the available power outlets, electrical auxiliary heaters are prohibited.
- Make sure to dispose of your cigarette butts in the provided ashtrays outside of the buildings.
- Dispose of trash and combustible waste (rags, etc.) in the hazardous waste containers located under a shelter, outside, in front of the Club building [10]. Moreover, hazardous chemicals must be stored and inventoried in the small room provided for this purpose in the Clubs building [11], next to "David room".
- Do not leave your devices plugged in your room when you are absent.

- Only enter areas you have authorization to access.
- Avoid creating open flames.
- Food and drink is forbidden on working stations: take a break !

### In case of fire in a building

1. Keep calm.
2. Go to the meeting point of your building as indicated on the escape plan.
3. Listen to the instructions given by the logistics and rescue teams.



## SAFETY RULES IN BASE CAMP

### In order to avoid accidents

- Wear Personal Protective Equipment (PPE) and clothing.
- Avoid carrying heavy loads alone: ask for help.
- Don't overload power outlets: use power strips with breakers for computers and mobile phones.
- Wear clothes adapted to your activity.

## Respecting the environment

- Use the appropriate recycling bins available around camp.
- Disconnect any power tools once work is completed.
- Turn off lights, computers and printers etc. when not in use.

## For everybody's comfort

- At night keep noise to a minimum: avoid conversations in the corridors and avoid making unnecessary noise during sleeping hours both inside and outside buildings.
- Respect the 3 m safety distances around the fences. "Beware of the dogs" signs are located around camp: two dogs are kept on the premises at all times.



## SAFETY RULES ON THE LAUNCH PAD

The Ger Camp is a military area which has several PROHIBITED zones.

It is therefore essential to follow the safety rules below.

### Movements

- Wear, at all times, your personal C'Space badge inside the camp.
- Always stay on marked paths and roads whilst moving about (on foot or by bicycle).
- By night, use a flashlight to facilitate your movements on the camp.
- In the launch area vehicle parking is only possible in authorized areas.
- You must abide to traffic laws, speed limits, and other safety rules in hazardous areas (even by bike).
- It is forbidden to ride in transport trailers. All loads must be secured and tied down.

## Be aware of the different safety zones

- Pay attention to safety officers' instructions and those broadcast through the loudspeakers.
- Comply with the boundaries of the various areas.
- Don't enter or leave an area without being authorized by a safety officer.
- Members of the general public and other visitors must stay in the public area bordered by barriers and construction tape (red and white).
- The use of devices such as mobile phone, radio, walkie-talkies etc. is prohibited in the pyrotechnical area.

## Suspicious objects

- It is strictly forbidden to touch or keep any suspicious object found on the ground. Inform someone who's in charge of the security.
- Minors must be accompanied by their supervisors.

## Rocket retrieval

- All recoveries are done under the supervisor's responsibility and during the time slot allocated to your team.
- It is absolutely forbidden to recover a rocket alone.
- It is forbidden to climb in order to recover objects (ladders, trees, etc.).





MINISTÈRE DE LA DÉFENSE

**NOTE - EXPRESS**

(*) NON PROTEGE	DIFFUSION RESTREINTE	CONFIDENTIEL DEFENSE
Origine	:	1RHP/BOI/INS/GER
Suivi par	:	
Destinataire(s)	:	EM 11 BP, 35 RAP/ETAP/5 RHC/EM BFST/4 RHFS/GSBdD- antenne TARBES/1 RCP/13 RDP/31 RG/48 RT/1 RTP/RSC/1
(pour action)		RPIMa/3 RMAT
Destinataire(s)	:	EMSD-BPMRE
(pour information)		
Copie(s) interieure(s)	:	CDUs
Tarbes, le N° /1RHP/BOI/INS/GER		
Objet	:	Protection contre le risque pyrotechnique résiduel sur le camp de Ger.
Référence	:	lettre N° 501872 DEF/EMZD-BDX/DT/BPMRE du 07 juillet 2014
Pièces jointes	:	1- Référentiel d'accès. 2- Zonage du camp de GER.
Primo	:	Conformément à la lettre de référence précisant les conclusions de la commission d'évaluation du risque pyrotechnique résiduel (CERP), le zonage du risque pyrotechnique définitif du camp de Ger a été validé. Ce zonage prend en compte l'étude historique de pollution pyrotechnique.
Secundo	:	En conséquence, les détachements évoluant sur le camp se conformeront aux mesures suivantes:
Alpha : Information sur le risque pyrotechnique. A son arrivée au camp de Ger, le chef de détachement recevra une information sur le risque pyrotechnique qu'il diffusera obligatoirement à l'ensemble de ses subordonnés. La délivrance de cette information sera attestée (cahier de consignes).		
Bravo : Manœuvre et accès. - Les zones de manœuvre sont soumises à la validation de la cellule accueil du camp et font l'objet d'une autorisation formelle (cahier de consignes). - La circulation hors piste est interdite dès lors qu'il s'agit de déplacement hors manœuvre.		
Charlie : Tirs. L'utilisation des champs de tir est soumise à la validation de la cellule tir du camp et fait l'objet d'une autorisation formelle (cahier de tir).		
Delta : Conduite à tenir en cas de découverte d'engin pouvant représenter un danger pyrotechnique. Interdiction de toucher l'engin, effectuer un balisage sommaire, rendre compte à la cellule tir du camp (05 62 56 85 51 ou le SOP 05 62 56 85 81 ou l'officier de tir 06 31 26 66 34)		
Tertio	:	Ces consignes seront rappelées systématiquement dans les messages de confirmation de réservation.
Le lieutenant-colonel Marc LECOINTRE chef du bureau opérations et instruction du 1 <sup>er</sup> régiment de hussards parachutiste par suppléance		
(*) Indiquer les mentions de protection (NON PROTEGE, DIFFUSION RESTREINTE, CONFIDENTIEL DEFENSE)		

(\*) Indiquer les mentions de protection (NON PROTEGE, DIFFUSION RESTREINTE, CONFIDENTIEL DEFENSE)

Quartier Dartencet chemin de Benate 64530 GER - PNIA : 821 646 85 41 TEL : 05 62 56 85 41 FAX : 05 62 56 85 60  
COURRIEL : thierry.vandeville@intradef.gouv.fr

ATTACHMENT N°1  
To NE n° /1<sup>er</sup> RHP/BOI/INS/GER

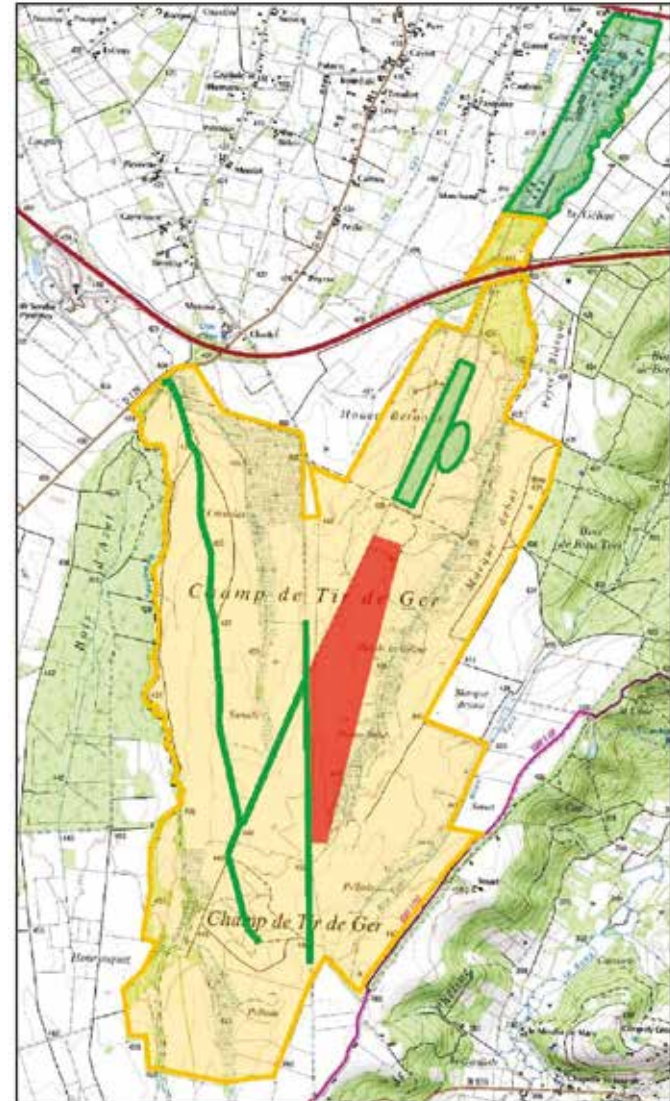
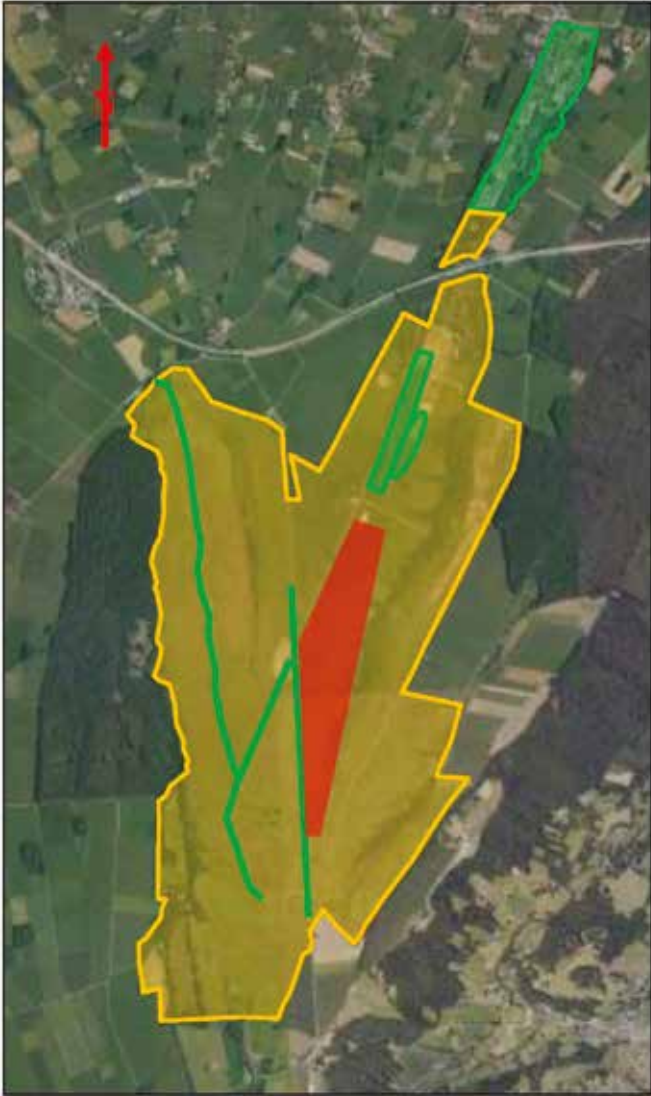
**ACCESS REFERENCES TO THE GER CAMP**

ZONES (Out of the built camp)		Qualifications
Staff categories	Red Proven pyrotechnic risk	1 and 2 Cf. qualifications
	Orange Probable pyrotechnic risk	1 and 2 Cf. qualifications
Activities	Military staff	On formal authorization from the shooting cell
	Military activities/ Operations	Information on the pyrotechnic risk, how to act against the danger. On formal authorization from the shooting cell.
Traffic (off operations)	Military activities/ shots	Information on the pyrotechnic risk, how to act against the danger. On formal authorization from the shooting cell.
	Traffic on roads, trails	On formal authorization from the shooting cell
Staff categories	Off tracks traffic	On formal authorization from the shooting cell
	1. Military qualified staff (ex. NEDEX...) 2. Military staff informed about the pyrotechnic risk	On formal authorization from the shooting cell

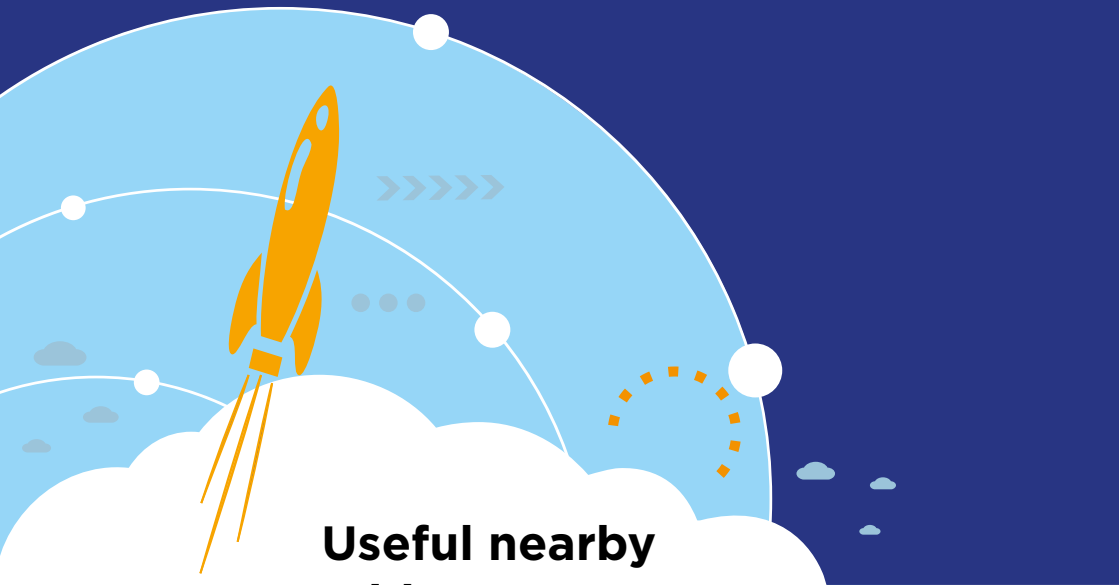
\* Except with special authorization of the commanding officer

**For cases not covered by these standards, the decisions fall within the CDC after collecting the opinion of the SID**

## GER CAMP ZONING







# Useful nearby addresses

## DIY STORES

Bricolage Leclerc CDA SO  
Route de Pau, 65420 Ibos  
+33 (0)5 62 90 62 11

SAVFIMA - quincaillerie  
Rue de la Poste 65420 Ibos  
+33(0)5 62 90 08 71

Mr Bricolage  
Centre Commercial - Route de Pau,  
65000 Tarbes - +33 (0)5 62 44 09 44

## COMPUTER STORES

Micro Récup  
17 rue du cimetière de la sède, 65000 Tarbes  
+33 (0)5 62 93 76 43

Équipement informatique  
6 rue André Breyer, 65000 Tarbes  
+33 (0)5 62 93 95 74

## SUPERMARKET

E. Leclerc  
Route de Pau, 65429 Ibos  
+33 (0)5 62 90 62 62

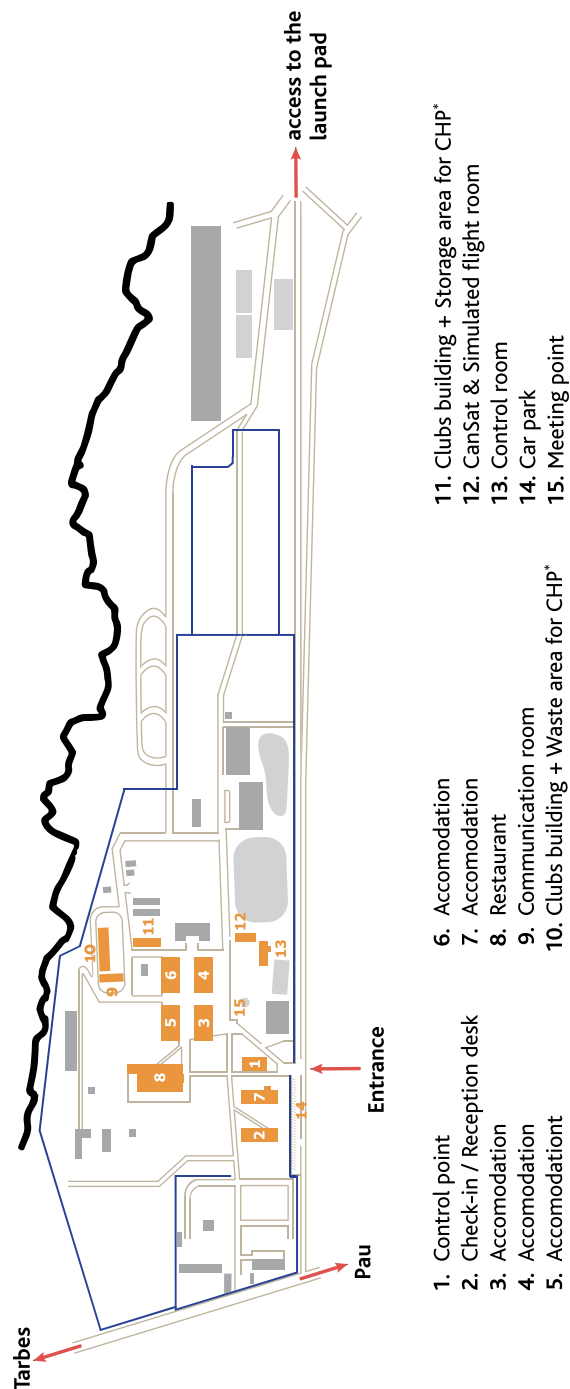


# Backpack: check-list of items YOU MUST NOT FORGET!

What for ?	To take
<b>To access the site</b>	<ul style="list-style-type: none"> <li>&gt; valid passport</li> <li>&gt; vehicle documents and insurance (if you come by car)</li> <li>&gt; driving license</li> <li>&gt; A proof of vaccination or a PCR/antigenetical test</li> <li>&gt; masks</li> </ul>
<b>Because the sun will be shining on C'Space</b>	<ul style="list-style-type: none"> <li>&gt; sunglasses</li> <li>&gt; hat/cap</li> <li>&gt; sun cream</li> </ul>
<b>To access the launch area</b>  <b>Warning:</b> people who fail to respect the dress code won't be allowed to enter the launch area or participate in rocket recovery	<ul style="list-style-type: none"> <li>&gt; long trousers</li> <li>&gt; sturdy closed shoes</li> <li>&gt; rainwear (depending of the weather)</li> <li>&gt; insect repellent</li> <li>&gt; bottle of water</li> <li>&gt; snacks</li> </ul>
<b>For working</b>	<ul style="list-style-type: none"> <li>&gt; working clothes</li> <li>&gt; eye and hand protection</li> </ul>
<b>For accommodation</b>	<ul style="list-style-type: none"> <li>&gt; 2 padlocks (for the lockers)</li> <li>&gt; shower towel</li> <li>&gt; soap</li> <li>&gt; sleeping bag</li> </ul>
<b>For hiking</b>	<ul style="list-style-type: none"> <li>&gt; hiking shoes</li> </ul>
<b>To get about on the camp at night</b>	<ul style="list-style-type: none"> <li>&gt; flashlight or headlamp</li> </ul>



# C'Space base map



16

- |                              |  |  |
|------------------------------|--|--|
| 1. Control point             | 6. Accommodation                         | 11. Clubs building + Storage area for CHP* |
| 2. Check-in / Reception desk | 7. Accommodation                         | 12. CanSat & Simulated flight room         |
| 3. Accommodation             | 8. Restaurant                            | 13. Control room                           |
| 4. Accommodation             | 9. Communication room                    | 14. Car park                               |
| 5. Accommodation             | 10. Clubs building + Waste area for CHP* | 15. Meeting point                          |

\*CHP = Chemicals and Hazardous Products

## Emergency phone Number: 18 or 112



## How to drive to the Military Camp ?

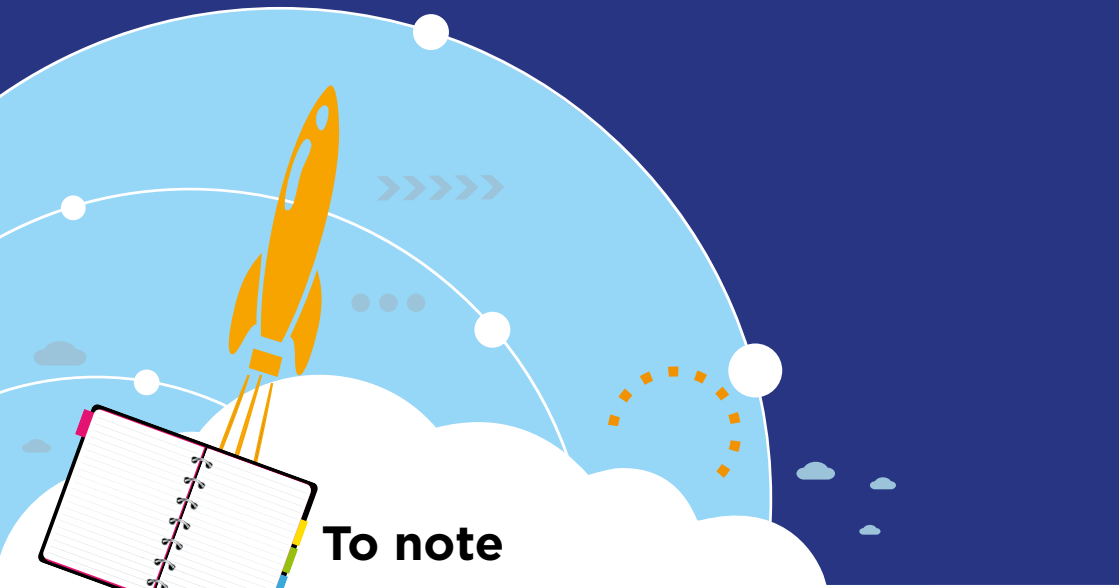
- **From Tarbes :** Direction Ibos (D817) for 8km. The military camp will be on your left, in front of the restaurant named « La Clé d'Or ».
- **From Bordeaux (A64) :** Take the Exit 11 (Soumoulou), then drive in the direction of Tarbes (D187) for 12km. The military camp will be on your left, in front of the restaurant named « La Clé d'Or ».
- **>From Toulouse (A64) :** Exit 12 (Lourdes), after the highway toll take N21 to Tarbes. After the second roundabout, take the direction of Ibos (D187). Go on for 10km, The military camp will be on your left, in front of the restaurant named « La Clé d'Or ».



**Adresse :** Camp de Ger - Quartier Dartencet  
Chemin de Bénate  
64530 GER

**Warning :**  
To access the military camp you will have to show an ID card.  
To those who are foreigners please send us your names, date and place of birth.

17



## To note