



FROM THE 6<sup>TH</sup> TO THE 13 JULY 2024

# CSPACE

the student space event

**PARTICIPANT  
HANDBOOK**

**Camp militaire  
de Ger du 1<sup>er</sup> RHP**  
(Régiment de Hussards Parachutistes)



## Welcome to the 2024 edition of C'Space!

*This year, **C'Space** will take place from 6<sup>th</sup> to 13<sup>th</sup> July 2024, on the military camp of the 1<sup>st</sup> RHP (Régiment de Hussards Parachutistes) in Ger (64).*

### ON ARRIVAL

- 1.** At the entrance to the site, you will be given your badge. This badge must be worn visibly at all times, do not lose it: it can be requested at any time by the soldiers of the 1<sup>st</sup> RHP and the organisation inside the site.
- 2.** You must go to the C'Space Reception [2] to check your details and allocate your rooms. The **C'Space** Reception is open from **9am to 7pm**, so you must arrive during these hours!
- 3.** You will receive a bag containing the necessary **C'Space** documents.
- 4.** To leave your belongings, go to your room [3-7]. **Don't forget to bring a padlock** to secure your valuables in your lockers.
- 5.** Then follow the arrows to the Club Building [10-11]. You will be assigned a stand there.
- 6.** Your car, once unloaded, should remain parked in the entrance car park of the Ger camp (outside the site). You can also travel by bicycle (respecting the traffic regulations) or on foot. Travelling on the Ger camp is forbidden after 2:00 am. During the day, **a shuttle service, subject to registration**, is set up to access the launch area, which is about 3 km from the base camp.

Places marked [n] are to be found on the last page  
of this document, «the base camp».



## Practical information

### GOOD MANNERS

anxious.ses to preserve the quality of accommodation conditions for all.the.s, we ask you to respect:

- Quietness in the rooms and corridors after 10pm.
- The authority of the organising staff. They are the guarantors of your comfort and safety: we ask you to accept their interventions with good will and courtesy.
- The premises and equipment: please make sure that your room is as clean as you found it on arrival. In particular, you are requested.e.s to leave the floors clean and to empty the bins.
- **Smoking is strictly prohibited** inside the premises.



- You will be accommodated.e.s per club.
- Please make sure you bring a sleeping bag and a bolster/pillow.
- A fitted sheet and disposable mattress protector will be available at the Ger Camp.
- The accommodation buildings are located about 100 meters from the club buildings.
- The rooms are nominally composed of 6 beds and individual wardrobes.
- Showers are separate from the rooms.

### SAFETY

Safety instructions, particularly for evacuation in the event of fire, are posted in each building next to the evacuation plans. It is important to respect them for the safety of everyone and the smooth running of the event.

JULY 2024		Saturday 6th	Sunday 7th	Monday 8th	Tuesday 9th	Wednesday 10th	Official open day		Friday 12th	Saturday 13th
Breakfast • 7-8:30 AM										
MORNING • 8 - 12 AM	Base camp	Reception	Club set-up Project monitoring	Project monitoring	Project monitoring	Project monitoring	End of project monitoring			Departure
		Reception	9 am Opening ceremony of the CanSat competition 9:30 am CanSat qualifiers	Fire swatter training 9:30 am CanSat qualifiers	9:30 am CanSat releases ER and MR launches	9 m CanSat flight result presentations	9:30 am Student presentation and official visits			
	Launch area					ER and MR launches	ER and MR launches	End of ER and MR launches		
Lunch • 11:30 AM -1:30 PM										
AFTERNOON • 1:30 - 6 PM	Base camp	Reception	Club set-up Project monitoring	Project monitoring	Project monitoring	Project monitoring	Tidying up the club stands already launched	Tidying up the club stands		Departure
		Reception	2 pm CanSat qualifiers 6 pm Security briefing for everybody with evacuation exercise 6:30 pm Opening ceremony	2 pm CanSat qualifiers	2 pm CanSat releases	CanSat prize ceremony				
	Launch area			2 pm CanSat test flights Start of ER and MR launches	ER and MR launches	ER and MR launches	ER and MR launches 2 pm Stratospheric balloon	Tidying up the rooms for departure		
Dinner • 6-8 PM										
EVENING • 9 PM - 12 AM	Base camp	Start of project monitoring	Project monitoring	Project monitoring	Project monitoring	Project monitoring			8:30 pm C'Space prize ceremony and end of event gala	
	Launch area			8:30-10 pm Profession conferences	8:30-10 pm Profession conferences	10 pm Night launches				

En of launches : 6 pm | End of tests : 11:30 pm | End of integration work : 12 am

Ceremony

Control

Launches / Releases

Installation / Storage

CanSat France competition

Profession conferences

ER = experimental rocket / MR = mini rocket



## YOUR CANTINE ACCESS

All meals are taken at the Ger camp canteen at the following times:

- **Breakfast: 7.00am-8.30am**
- **Lunch: 11.30am-1.30pm**
- **Dinner: 6.00pm-8.00pm**

Please note: The restaurant will close 30 minutes after closing time.

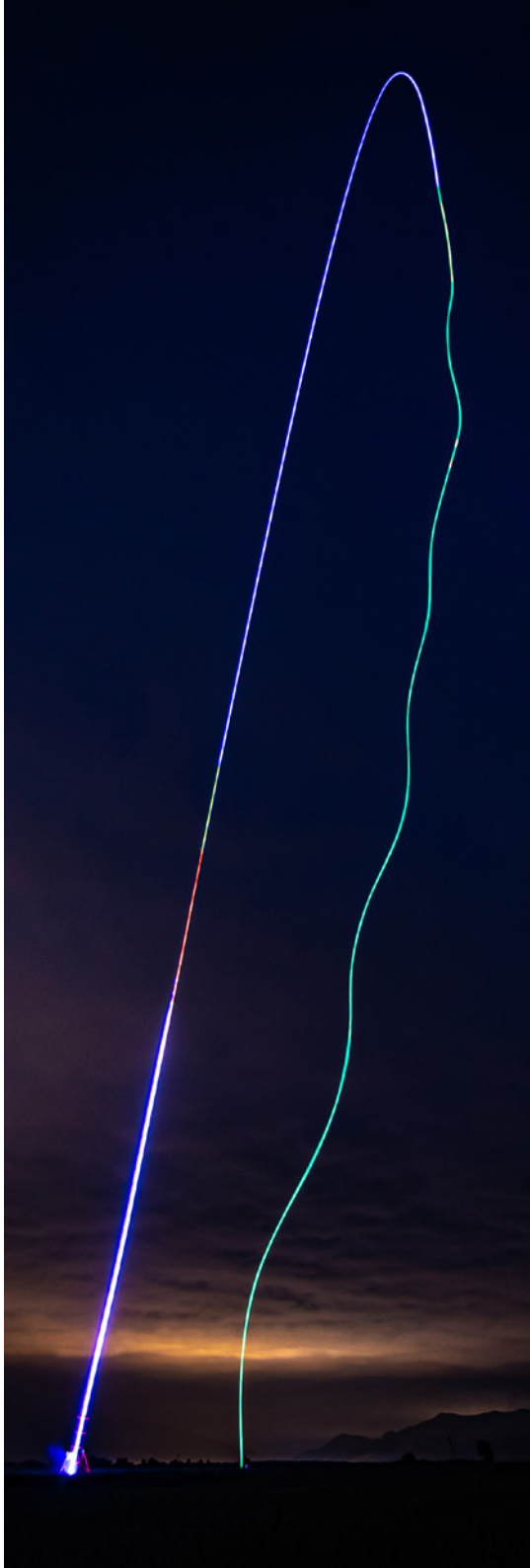
## PRACTICAL INFORMATION... FOR YOUR ARRIVAL & YOUR DEPARTURE

To prepare for your arrival and departure, remember to inquire and register to take advantage of the shuttles to or from Tarbes SNCF train station and the Tarbes/Lourdes/Ossun airport.

To get to the military camp by car see appendix ("Going to Ger camp" p. 15).

## GET INVOLVED, IN THE LIFE OF THE SITE !

The entire CNES team and Planète Sciences volunteers will be keen to exchange with you and accompany you throughout the event! Do not hesitate to contact them.



## The launch area

*The launch site, located about 3 km from the base, is accessible by shuttle and by «club» car on launch day.*

*The rocket launches take place from Monday afternoon to Friday noon: the order of flights is based on qualifications.*

*The last to qualify may not be able to launch if all the launch slots are already occupied, especially in the event of bad weather.*

*Report at project monitoring as soon as possible!*

*To access the launch area, you must wear long trousers and closed shoes.*

*Beware: it can be hot so remember to bring a hat and sun cream.*

## BEWARE

On the launch site, different safety zones are identified. For each zone, please make sure to follow the safety instructions posted or given by the operational teams.

Lighters or other materials that generate fire or heat as well as **mobile phones and all others connected devices (even if they are switched off) must be deposited in a club tent** in a box provided for this purpose before entering the pyrotechnic zone.

The recovery of the rockets will be done at the end of the launch slot (if the timing and the weather allow it), in the presence of at least one person in charge of the oper



## Safety instructions

### PREVENTIVE ACTIONS AGAINST FIRE

#### To facilitate evacuation

- Exits must remain free of all objects, equipment and furniture.
- Space between beds must remain free of all objects (such as chairs and tables or other furniture).
- Smoking or the use of electronic cigarettes is strictly prohibited in all buildings.
- Be careful with electrical appliances, use the available power outlets, electrical auxiliary heaters are prohibited.
- Make sure to dispose of your cigarette butts in the provided ashtrays outside of the buildings.
- Dispose of trash and combustible waste (rags, etc.) in the hazardous waste containers located under a shelter, outside, in front of the Club building [10]. Moreover, hazardous chemicals must be stored and inventoried in the small room provided for this purpose in the Clubs building [11], next to "David room".
- Do not leave your devices plugged in your room when you are absent.
- Only enter areas you have authorization to access.
- Avoid creating open flames.
- Food and drink is forbidden on working stations: take a break!

#### In case of fire in a building

1. Keep calm.
2. Go to the meeting point as indicated on the escape plan located in each building.
3. Listen to the instructions given by the logistics and rescue teams.



### SAFETY RULES IN BASE CAMP

#### In order to avoid accidents

- Wear Personal Protective Equipment (PPE) and clothing.
- Avoid carrying heavy loads alone: ask for help.
- Don't overload power outlets: use power strips with breakers for computers and mobile phones.
- Wear clothes adapted to your activity.
- Bring your used or faulty lithium batteries to the Optio PC for their management [4].  
**Caution:** do not mix them with others types of batteries in your storage tray !

#### Respecting the environment

- Use the appropriate recycling bins available around camp.
- Disconnect any power tools once work is completed.
- Turn off lights, computers and printers... after activities.

#### For everybody's comfort

- At night keep noise to a minimum: avoid conversations in the corridors and avoid making unnecessary noise during sleeping hours both inside and outside buildings.
- Respect the 3 m safety distances around the fences.
- "Beware of the dogs" signs are located around camp: two dogs are kept on the premises at all times.

### SAFETY RULES ON THE LAUNCH PAD

The Ger Camp is a military area which has several PROHIBITED zones. It is therefore essential to follow the safety rules below.

#### Movements

- Wear, at all times, your personal C'Space badge inside the camp.
- Always stay on marked paths and roads whilst moving about (on foot or by bicycle).
- By night, use a flashlight to facilitate your movements on the camp.
- In the launch area vehicle parking is only possible in authorized areas.
- You must abide to traffic laws, speed limits, and other safety rules in hazardous areas (even by bike).
- It is forbidden to ride in transport trailers. All loads must be secured and tied down.

#### Be aware of the different safety zones

- Pay attention to safety officers' instructions and those broadcast through the loudspeakers.
- Comply with the boundaries of the various areas.
- Don't enter or leave an area without being authorized by a safety officer.
- Members of the general public and other visitors must stay in the public area bordered by barriers and construction tape (red and white).
- The use of devices such as mobile phone, radio, walkie-talkies etc. is prohibited in the pyrotechnical area..

#### Objects

- It is strictly forbidden to touch or keep any suspicious object found on the ground.  
Inform someone who's in charge of the security.
- Minors must be accompanied by their supervisors.

#### Rocket retrieval

- All recoveries are done under the supervisor's responsibility and during the time slot allocated to your team.
- It is absolutely forbidden to recover a rocket alone.
- It is forbidden to climb in order to recover objects (ladders, trees, etc.).

MINISTÈRE DE LA DÉFENSE

**NOTE - EXPRESS**

(*) NON PROTEGE		DIFFUSION RESTREINTE	CONFIDENTIEL DEFENSE
Origine	:	1RHP/BOI/INS/GER	
Suivi par	:		
Destinataire(s) (pour action)	:	EM 11 BP, 35 RAP/ETAP/5 RHC/EM BFST/4 RHFS/GSBdD- antenne TARBES/1 RCP/13 RDP/31 RG/48 RT/1 RTP/RSC/1 RPIMa/3 RMAT	
Destinataire(s) (pour information)	:	EMSD-BPMRE	
Copie(s) interieure(s)	:	CDUs	
Tarbes, le N° /1RHP/BOI/INS/GER			
Objet	:	Protection contre le risque pyrotechnique résiduel sur le camp de Ger.	
Référence	:	lettre N° 501872 DEF/EMZD-BDX/DT/BPMRE du 07 juillet 2014	
Pièces jointes	:	1- Référentiel d'accès. 2- Zonage du camp de GER.	
Primo	:	Conformément à la lettre de référence précisant les conclusions de la commission d'évaluation du risque pyrotechnique résiduel (CERP), le zonage du risque pyrotechnique définitif du camp de Ger a été validé. Ce zonage prend en compte l'étude historique de pollution pyrotechnique.	
Secundo	:	En conséquence, les détachements évoluant sur le camp se conformeront aux mesures suivantes:	
Alpha : Information sur le risque pyrotechnique. A son arrivée au camp de Ger, le chef de détachement recevra une information sur le risque pyrotechnique qu'il diffusera obligatoirement à l'ensemble de ses subordonnés. La délivrance de cette information sera attestée (cahier de consignes).			
Bravo : Manœuvre et accès. - Les zones de manœuvre sont soumises à la validation de la cellule accueil du camp et font l'objet d'une autorisation formelle (cahier de consignes). - La circulation hors piste est interdite dès lors qu'il s'agit de déplacement hors manœuvre.			
Charlie : Tirs. L'utilisation des champs de tir est soumise à la validation de la cellule tir du camp et fait l'objet d'une autorisation formelle (cahier de tir).			
Delta : Conduite à tenir en cas de découverte d'engin pouvant représenter un danger pyrotechnique. Intention de toucher l'engin, effectuer un balisage sommaire, rendre compte à la cellule tir du camp (05 62 56 85 51 ou le SOP 05 62 56 85 81 ou l'officier de tir 06 31 26 66 34)			
Tertio	:	Ces consignes seront rappelées systématiquement dans les messages de confirmation de réservation.	
Le lieutenant-colonel Marc LECOINTRE chef du bureau opérations et instruction du 1 <sup>er</sup> régiment de hussards parachutiste par suppléance			
(*) Indiquer les mentions de protection (NON PROTEGE, DIFFUSION RESTREINTE, CONFIDENTIEL DEFENSE)			

ATTACHMENT N°1  
To NE n° /1<sup>er</sup> RHP/BOI/INS/GER

ACCESS REFERENCES TO THE GER CAMP

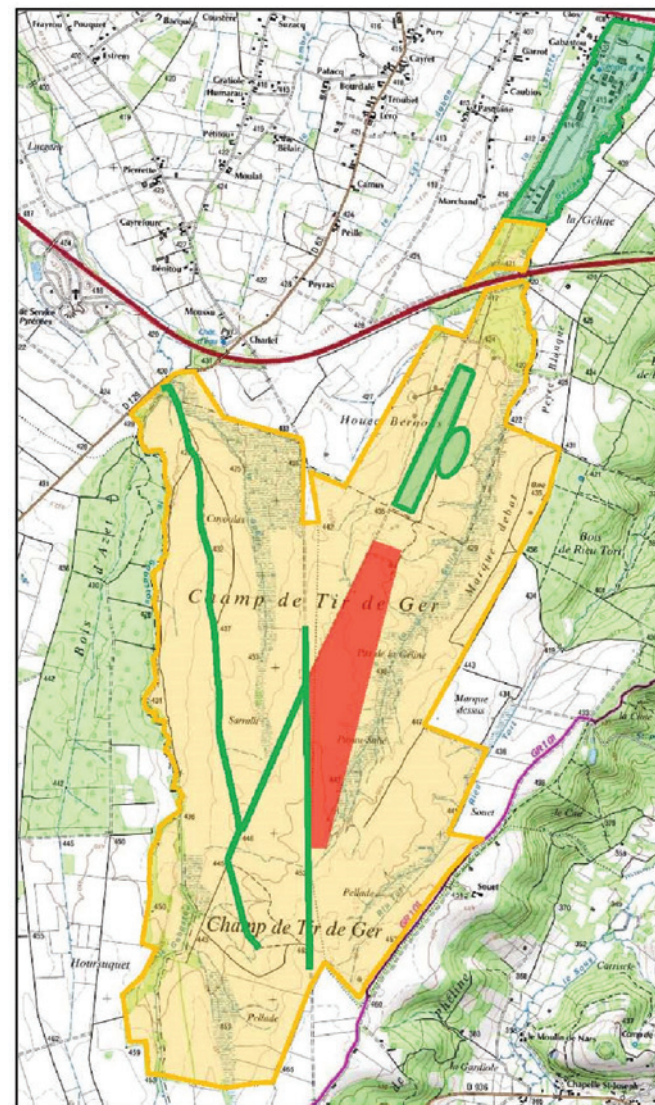
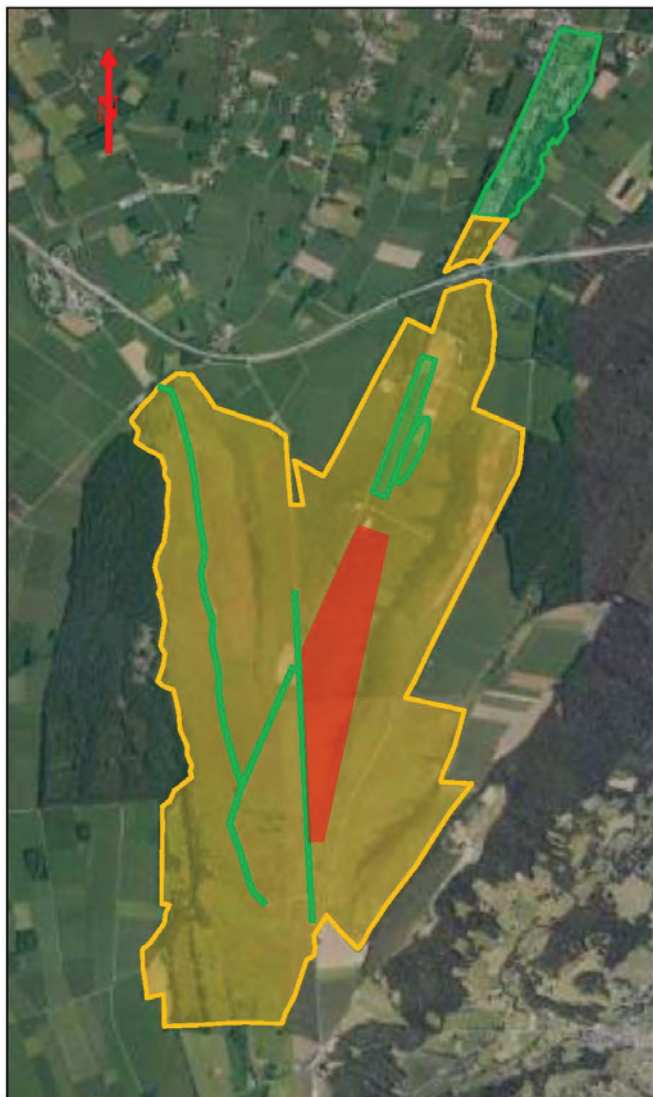
ZONES (Out of the built camp)		Qualifications	
Staff categories	Military staff	Green Low or no pyrotechnic risk	On formal authorization from the shooting cell
		Orange Probable pyrotechnic risk	On formal authorization from the shooting cell
Activities	Military activities/ Operations	Red Proven pyrotechnic risk	Information on the pyrotechnic risk, how to act against the danger. On formal authorization from the shooting cell.
	Military activities/ shots		Information on the pyrotechnic risk, how to act against the danger. On formal authorization from the shooting cell.
Traffic (off operations)	Traffic on roads, trails		On formal authorization from the shooting cell
	Off tracks traffic		
Staff categories	1. Military qualified staff (ex. NEDEX...)		
	2. Military staff informed about the pyrotechnic risk		

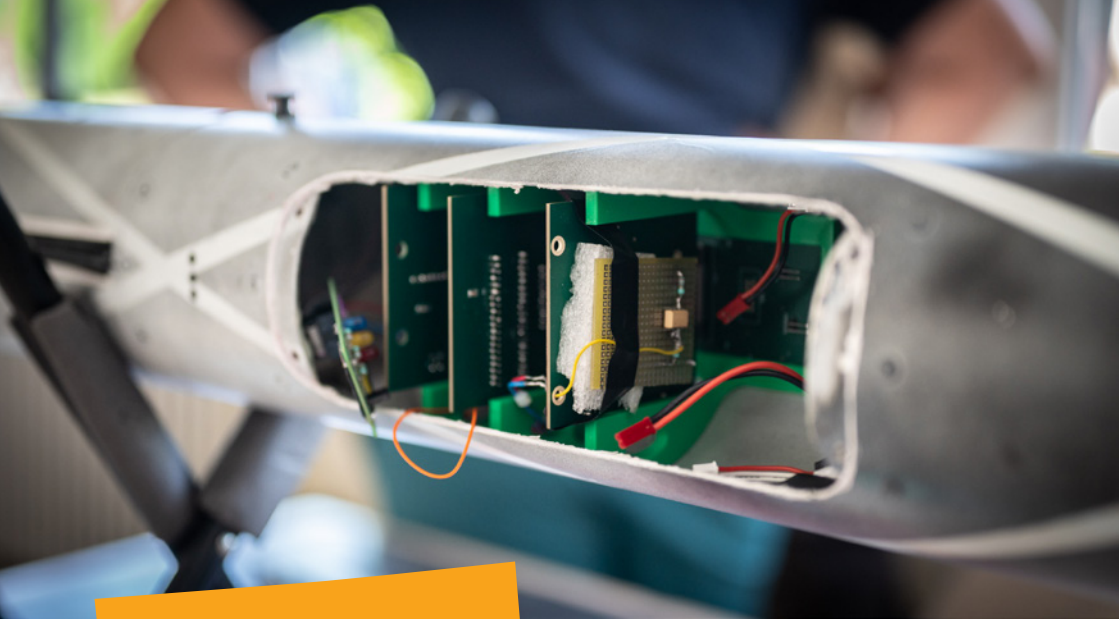
\* Except with special authorization of the commanding officer

For cases not covered by these standards, the decisions fall within the CDC after collecting the opinion of the SID



# GER CAMP ZONING





## Your useful addresses

### DIY STORES

#### Bricolage Leclerc CDA SO

Route de Pau, 65420 Ibos - 05 62 90 68 40

#### SAVFIMA – quincaillerie

5 Route de Pau, 65420 Ibos - 05 62 90 08 71

#### Mr Bricolage

Centre Commercial - Route de Pau,  
65000 Tarbes - 05 62 44 09 44

### COMPUTER STORE

#### Micro Récup

17 rue du cimetière de la Sède, 65000 Tarbes  
05 62 93 76 43

### SUPERMARKET

#### E. Leclerc

Route de Pau, 65429 Ibos - 05 62 90 62 62

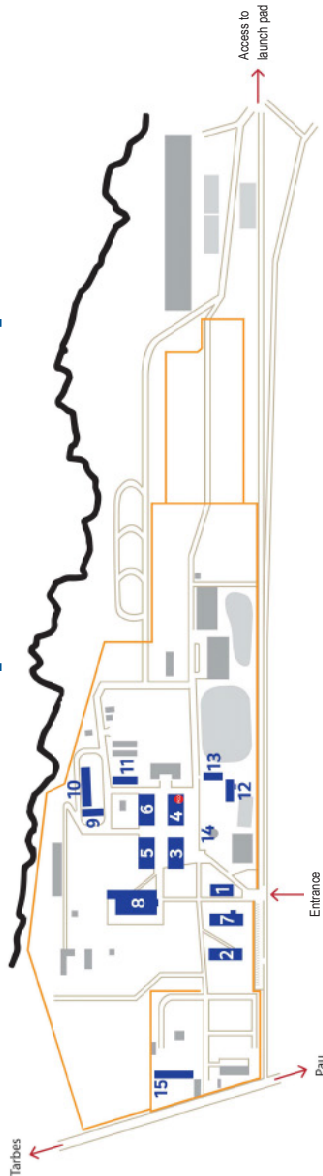
## Not to forget in your suitcase!

What for?	To take
To access the site	<input type="checkbox"/> valid passport  <i>For the drivers:</i> <input type="checkbox"/> vehicle documents and insurance <input type="checkbox"/> driving license
Because the sun will be shining on C'Space	<input type="checkbox"/> sunglasses <input type="checkbox"/> hat/cap <input type="checkbox"/> sun cream <input type="checkbox"/> water bottle
<b>To access the launch area</b>  <b>Warning:</b> people who fail to respect the dress code won't be allowed to enter the launch area or participate in rocket recovery	<input type="checkbox"/> long trousers <input type="checkbox"/> sturdy closed shoes <input type="checkbox"/> rainwear (depending of the weather) <input type="checkbox"/> insect repellent <input type="checkbox"/> bottle of water <input type="checkbox"/> snacks
or working	<input type="checkbox"/> working clothes <input type="checkbox"/> eye and hand protection <input type="checkbox"/> USB keys
For accommodation	<input type="checkbox"/> 2 padlocks (for the lockers) <input type="checkbox"/> shower towel <input type="checkbox"/> soap <input type="checkbox"/> sleeping bag and pillow
For hiking	<input type="checkbox"/> hiking shoes
To get about on the camp at night	<input type="checkbox"/> flashlight or headlamp

**Don't forget your space project and all the tools you need to work!**



# C'Space base map



- 1 - Control point
  - 2 - Check in / reception desk
  - 3 - Accommodation (Eylau)
  - 4 - Accommodation (Sébastopol)
  - 5 - Accommodation (Castiglione)
  - 6 - Accommodation (La Mortagne)
  - 7 - Accommodation (Verdun)
  - 8 - Restaurant-self « L'ordinaire »
  - 9 - Communication room
  - 10 - Clubs building + waste area for CHP\*
  - 11 - Clubs building + waste area for CHP\*
  - 12 - Control room
  - 13 - Simulated flight room
  - 14 - Meeting point
  - 15 - Mess
- \*CHP Chemicals and hazardous products



Emergency phone Number: **18 or 112**



## How to drive to the Military Camp?

**From Tarbes:** Direction Ibos (D817) for 8km. The military camp will be on your left, in front of the restaurant named « La Clé d'Or ».

**From Bordeaux (A64):** Take the Exit 11 (Soumoulou), then drive in the direction of Tarbes (D187) for 12km. The military camp will be on your left, in front of the restaurant named « La Clé d'Or ».

**From Toulouse (A64):** Exit 12 (Lourdes), after the highway toll take N21 to Tarbes. After the second roundabout, take the direction of Ibos (D187). Go on for 10km, The military camp will be on your left, in front of the restaurant named « La Clé d'Or ».



Adresse:  
**Camp de Ger - Quartier Dartencet**  
Chemin de Bénate  
64530 GER

### Warning

To access the military camp you will have to show a valid identity document.  
Copies and digital format are not accepted.  
Without this identity document you will not be able to enter the camp.



## To note



**Centre national d'études spatiales**

2 place Maurice Quentin  
75039 Paris cedex 01 - France  
Tél. : +33 (0)1 44 76 75 00

**cnes.fr**

