

PARTICIPANT HANDBOOK

ESPACE

THE STUDENT SPACE EVENT

60 ANS



FROM THE 15TH TO THE 22ND JULY 2023

CAMP DE GER DU 1^{ER} RHP



Join us this year as we celebrate 60 years of C'Space, the long-awaited space event!

Get ready for an exciting week at the **1^{er} RHP military camp in Ger (64)**, from **15th to 22nd July 2023**.

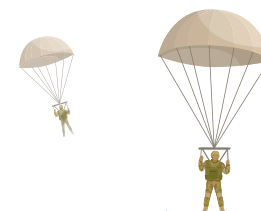
When you arrive, here are the details:

- 1.** At the entrance to the site you will receive **your badge, a precious sesame!** Wear it proudly and make sure it is visible at all times. Soldiers from the 1^{er} RHP and the organisation may ask you for it at any time.
- 2.** You must go through the C'SAPCE reception desk. **Open from 9 a.m. to 7 p.m.**, reception will be happy to check your details and allocate your rooms. Don't forget to arrive during these hours.
- 3.** When you arrive, you will receive a **bag** containing all the documents you need to make the most of C'SPACE. Keep it handy.
- 4.** To leave your belongings, go to your room [3-7]. **Don't forget to bring a padlock** to secure your valuables in your lockers.

5. Go to the clubs building [10-11] where your stand is waiting impatiently for you.

6. If you have your own car, you can unload it inside the camp. However, bear in mind **that parking will be only authorised on the entrance car park**, outside the site. To get around, you can bring a bike (respecting the Highway Code), or simply walk. **From 2.00 am onwards, it will be forbidden to move around the Ger camp.** But don't worry, during the day we've set up a shuttle service, on demand, to take you to the launch area, around 3 km from the base.

Get ready for **a week of space adventures**, exciting encounters and memories etched in the stars.





PARTICIPANT HANDBOOK - C'SPACE 2023



Restaurant access: Tasty times

All meals will be served in the Ger camp self-service restaurant, so don't miss out! Here are the times to remember:

- **Breakfast:** from **7.00am** to **8.30am**, to start the day on the right foot.
- **Lunch:** from **11:30** to **14:00**, a well-deserved break to regain your strength.
- **Dinner:** from **18:00** to **20:00**, to share a convivial meal and recharge your batteries.

Please note that **no guests will be accepted after 8.30pm**. Make sure to be on time enjoy the delicious meals prepared for you



Practical info: Well-organised arrival and departure

To make your arrival and departure easier, **don't forget to ask and register for the shuttle** linking Tarbes SNCF station and Tarbes/Lourdes/Ossun airport to the military camp. Convenient options to make your trip even more disfruitable!

If you plan to travel by car, see «**Getting to the Ger camp**» on page 15 for detailed instructions.



Take part in the life of the site too!

The CNES team and Planète Sciences volunteers are looking forward to welcoming you and accompanying you throughout the event! They'll be on hand to chat, answer your questions and make your experience even more rewarding.

Don't hesitate to contact them if you need help, advice or just want to share your enthusiasm.



The launch area (a.k.a ZAS)

Welcome to the launch area, located just 3 km from the live base!

To get there, you can choose between the shuttle (with a reservation) or your own vehicle.

Rocket launches are scheduled from Monday afternoon to Friday noon. **The order of flights is determined according to qualifications.** However, the last qualified may find themselves unable to launch if all the slots are taken, especially if the weather is unfavourable. Don't take any chances, be ready as soon as possible.



Warning: it can get hot during the launches, so **don't forget your headgear and sun cream** to enjoy the event in comfort! Don't forget your binoculars, which will help you spot your flying wonders.

ATTENTION!

To ensure everyone's safety, we have identified different safety zones on the launch area (a.k.a ZAS).

Be sure to follow the instructions posted or given by the operational teams in each zone.

To avoid any risk, **lighters and any other equipment that generates fire or heat, as well as mobile phones (even if they are switched off), must be left in a club tent** in a box provided for this purpose before entering the pyrotechnics zone. Safety first!

Rockets will be collected at the end of each launch slot, timing and weather permitting. You'll be accompanied by at least one operation plan responsible to ensure everything goes smoothly.





Fire and evacuation measures

Keep all exits clear. Make sure that no equipment, furniture or objects disturbs access to an exit.

In bedrooms, keep the alleys between rows of beds, chairs and tables clear at all times. No furniture or equipment should be on the way.

Smoking or vaping is strictly prohibited inside all buildings.

Use available electrical sockets safely.

Remember to use the ashtrays provided to extinguish and dispose of your cigarette butts.

Combustible debris and waste, such as rags, should be disposed of in the bins for hazardous materials, located under a shelter outside, in front of the club building [10]. Let's keep our environment clean and safe.

Hazardous chemicals should be stored and catalogued in the small dedicated room in the Clubs Building, next to the David Room [11].

When you leave your room, unplug your electrical appliances.

Avoid using naked flames in high-risk areas. Safety comes first!

Finally, it is forbidden to eat or drink on your work table. Don't forget to take a break for refreshments. Take care of yourself!

By following these instructions, we are creating a safe and pleasant environment for everyone.

Thank you for your cooperation!

In the event of a fire in a building



- Stay calm.
- Evacuate to the assembly point [15] following the evacuation plan located in each building (and on your badge!).
- Listen carefully to the instructions of the organisation and rescue team.



Safety rules in the base camp

Let's avoid accidents:

- Respect the wearing of personal protective equipment (PPE). Let's ensure our personal safety.
- Avoid carrying heavy loads alone. Ask for help if necessary.
- Do not overload electrical sockets. Use power strips with circuit breakers for computers and mobile phones.
- Wear appropriate clothing for the activity you are carrying out. Be comfortable and safe.

Let's be eco-responsible:

Respect selective sorting. Help protect our environment.

Unplug equipment once the work is finished. Let's save energy.

Turn off lights, computers, printers... after activities. Let's make sure we use resources responsibly.

For the well-being of us all:

Let's avoid disturbances at night: let's avoid loud discussions in the corridors and noises during sleeping hours.

Let's respect everyone's rest.



NOTE - EXPRESS

(*) NON PROTEGE		DIFFUSION RESTREINTE		CONFIDENTIEL DEFENSE	
<u>Origine</u>	:	1RH/P/BO/INS/GER			
<u>Suivi par</u>	:				
<u>Destinataire(s)</u> (pour action)	:	EM 11 BP, 35 RAP/ETAP/5 RHC/EM BFST/4 RHFS/GSBDID- antenne TARBES/1 RCP/13 RDP/31 RG/48 RT/1 RTP/RSC/1 RPIMa/3 RMAT			
<u>Destinataire(s)</u> (pour information)	:	EMSD-BPMRE			
<u>Copie(s) interieure(s)</u>	:	CDUs			
TARBES, le		N° /1RH/P/BO/INS/GER			
<u>Objet</u>	:	Protection contre le risque pyrotechnique résiduel sur le camp de Ger.			
<u>Référence</u>	:	lettre N° 501872 DEF/EMZD-BDX/DT/BPMRE du 07 juillet 2014			
<u>Pièces jointes</u>	:	1- Référentiel d'accès. 2- Zonage du camp de GER.			
<u>Primo</u>	:	Conformément à la lettre de référence précisant les conclusions de la commission d'évaluation du risque pyrotechnique résiduel (CERP), le zonage du risque pyrotechnique définitif du camp de Ger a été validé. Ce zonage prend en compte l'étude historique de pollution pyrotechnique.			
<u>Secundo</u>	:	En conséquence, les détachements évoluant sur le camp se conformeront aux mesures suivantes:			
<p><u>Alpha</u> : Information sur le risque pyrotechnique.</p> <p>A son arrivée au camp de Ger, le chef de détachement recevra une information sur le risque pyrotechnique qu'il diffusera obligatoirement à l'ensemble de ses subordonnés. La délivrance de cette information sera attestée (cahier de consignes).</p> <p><u>Bravo</u> : Manœuvre et accès.</p> <ul style="list-style-type: none"> - Les zones de manœuvre sont soumises à la validation de la cellule accueil du camp et font l'objet d'une autorisation formelle (cahier de consignes). - La circulation hors piste est interdite dès lors qu'il s'agit de déplacement hors manœuvre. <p><u>Charlie</u> : Tirs.</p> <p>L'utilisation des champs de tir est soumise à la validation de la cellule tir du camp et fait l'objet d'une autorisation formelle (cahier de tir).</p> <p><u>Delta</u> : Conduite à tenir en cas de découverte d'engin pouvant représenter un danger pyrotechnique.</p> <p>Interdiction de toucher l'engin, effectuer un balisage sommaire, rendre compte à la cellule tir du camp (05 62 56 85 51 ou le SOP 05 62 56 85 81 ou l'officier de tir 06 31 26 66 34)</p> <p><u>Tertio</u> : Ces consignes seront rappelées systématiquement dans les messages de confirmation de réservation.</p>					
<p style="text-align: right;">Le lieutenant-colonel Marc LECOINTRE chef du bureau opérations et instruction du 1^{er} régiment de hussards parachutiste par suppléance</p>					
(*) Indiquer les mentions de protection (NON PROTEGE, DIFFUSION RESTREINTE, CONFIDENTIEL DEFENSE)					

Quartier Dartencet chemin de Benate 64530 GER - PNA : 821 646 85 41 TEL : 05 62 56 85 41 FAX : 05 62 56 85 60
COURRIEL : thierry.vendeville@intradef.gouv.fr

ATTACHMENT N°1
To NE n° 1^{er} RHP/BOI/INS/GER

RISK ZONES ON GER CAMP

		ZONES (Out of the base camp)			
		Red Proven pyrotechnic risk	Orange Probable pyrotechnic risk	Green Low or no pyrotechnic risk	Qualifications
Staff categories	Military staff	1	1 and 2	1 and 2 Cf. qualifications	On formal authorization from the shooting cell
Activities	Military activities/ Operations	forbidden *	Cf. qualifications	Cf. qualifications	Information on the pyrotechnic risk, how to act against the danger. On formal authorization from the shooting cell.
	Military activities/ shots	Cf. qualifications	Cf. qualifications	Cf. qualifications	Information on the pyrotechnic risk, how to act against the danger. On formal authorization from the shooting cell.
Traffic (off operations)	Traffic on roads, trails	forbidden *	Cf. qualifications		On formal authorization from the shooting cell
	Off tracks traffic	forbidden *	forbidden *	Cf. qualifications	
Staff categories	1. Military qualified staff (ex. NEDEX...)				
	2. Military staff informed about the pyrotechnic risk				

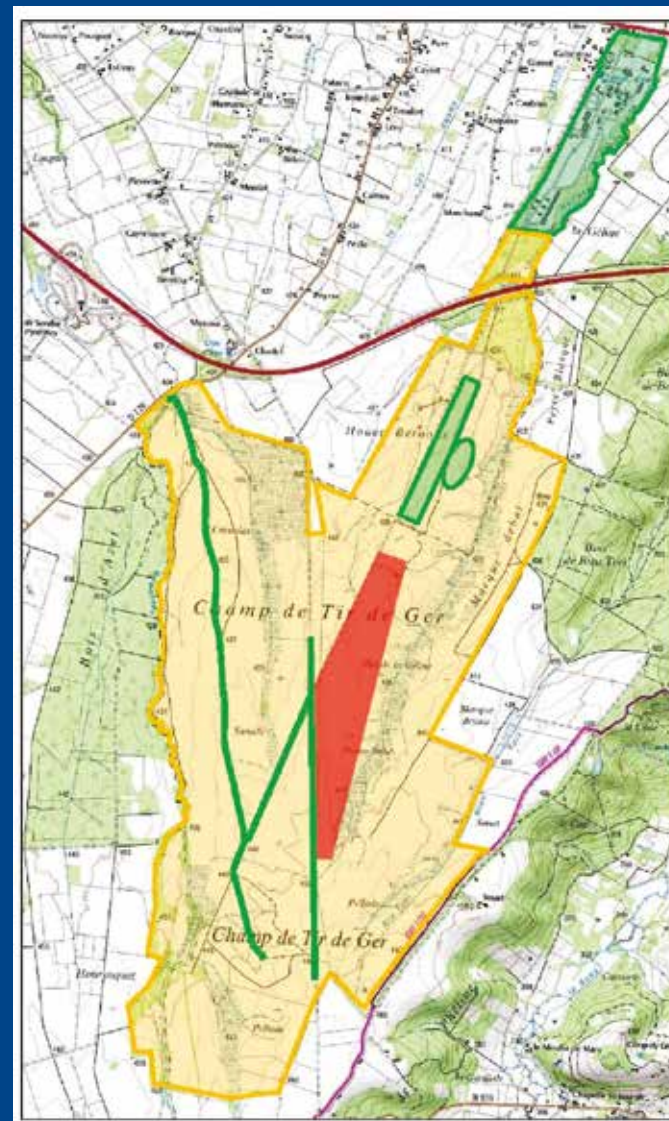
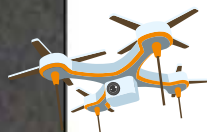
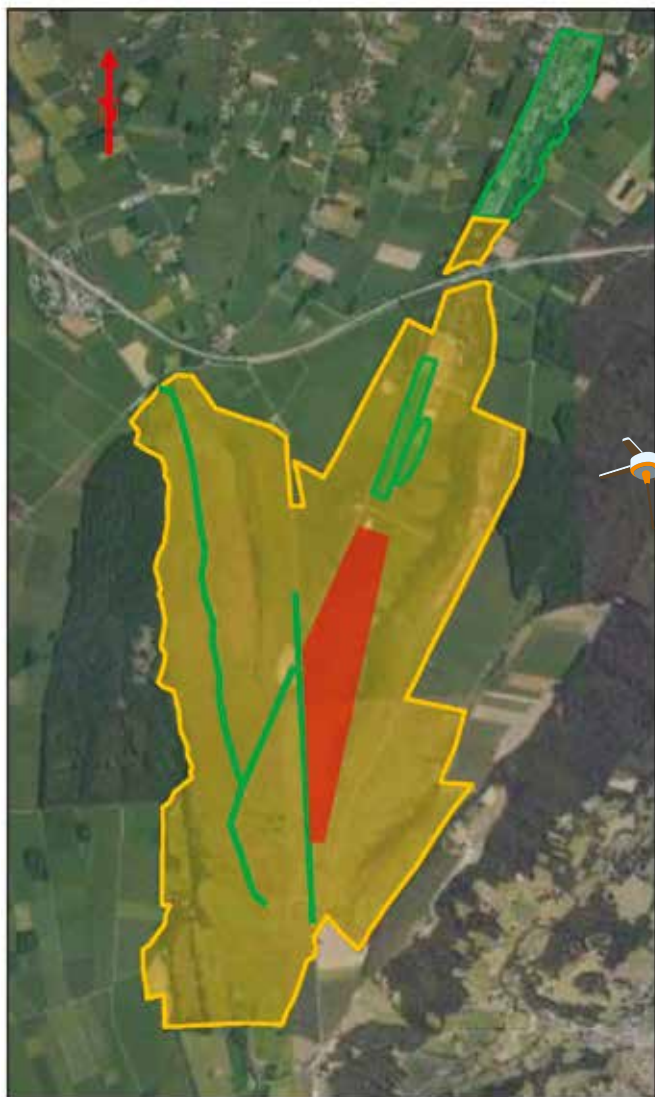
* Except with special authorization of the commanding officer

For cases not covered by these standards, the decisions fall within the CDC after collecting the opinion of the SID



ATTACHMENT N°2
To NE n° /1^{er} RHP/BOI/INS/GER

GER CAMP ZONING





Moving around the camp

Make sure you keep a safe distance of 3m around the fences. Let's ensure our own safety and that of others.

Be aware that dogs on leads are continuously present in the area. Let's pay attention to the «beware of dogs» signs.

Always wear your name-registered C'Space badge inside the camp. Let's facilitate proper access control.

When travelling, stay on marked and authorised paths. Let's ensure our safety on the road.

Use a torch when wandering at night and have a sure footing around the camp. Let's ensure our visibility.

Safety rules on the way for the launch area :

Vehicles may only be parked in authorised areas on the launch site.

You must respect the road regulation, speed limits and prohibitions in dangerous areas, even on bicycles.

It is forbidden to ride in transport trailers, and all loads must be secured.

Respect safety zones

Never enter or leave a zone without being authorised to do so by a security official.

Respect the demarcation of zones

Never enter or leave a zone without being authorised to do so by a security official.

The public and visitors must remain in the public area delimited by the barriers and the site strip (red and white).

The use of means of communication such as mobile phones, radios, walkie-talkies, etc. is forbidden in the pyrotechnics area.

Objects

It is strictly forbidden to touch or retrieve any suspicious object on the ground. Inform a security person.

Minors must be accompanied by their designated supervisor.

Rocket search and rescue



All searches are carried out under the responsibility of the accompanying persons.

It is absolutely forbidden to leave alone for recuperation

It is forbidden to climb, or to climb on a high support, such as ladders, stepladders, trees, etc.



Not to be forgotten in your suitcase!



Why?	To take with you
To access the site	<input type="checkbox"/> a valid identity document (passport or identity card) <input type="checkbox"/> a passport for foreigners <input type="checkbox"/> vehicle registration document and insurance policy <input type="checkbox"/> the driver's licence
Because the sun is may be strong during C'space	<input type="checkbox"/> sunglasses <input type="checkbox"/> cap/hat <input type="checkbox"/> sun cream <input type="checkbox"/> bottle of water
To access the launch area Warning: people who do not respect this dress code may be refused access to the to the launch area for recuperation	<input type="checkbox"/> long trousers <input type="checkbox"/> closed shoes <input type="checkbox"/> rainwear (depending on the weather) <input type="checkbox"/> insect repellent (watch out for horseflies) <input type="checkbox"/> water bottles <input type="checkbox"/> snacks
To work	<input type="checkbox"/> safe work clothing <input type="checkbox"/> eye and hand protection <input type="checkbox"/> USB sticks
For accommodation	<input type="checkbox"/> two padlocks (to lock cupboards) towel <input type="checkbox"/> soap and toiletries <input type="checkbox"/> sleeping bag and pillow
For hiking	<input type="checkbox"/> walking shoes
To get around the camp in the evening	<input type="checkbox"/> a torch or headlamp

Don't forget your space project and all the tools you need for the job



Your useful addresses



WORKHOUSE TOOLS

Bricolage Leclerc CDA SO
Route de Pau, 65420 Ibos - 05 62 90 68 40

SAVFIMA - quincaillerie

Rue de la Poste 65420 Ibos - 05 62 90 08 71

Mr Bricolage

Centre Commercial - Route de Pau,
65000 Tarbes - 05 62 44 09 44

COMPUTER / ELECTRONICS

Micro Récup

17 rue du cimetière de la Sède, 65000 Tarbes
05 62 93 76 43

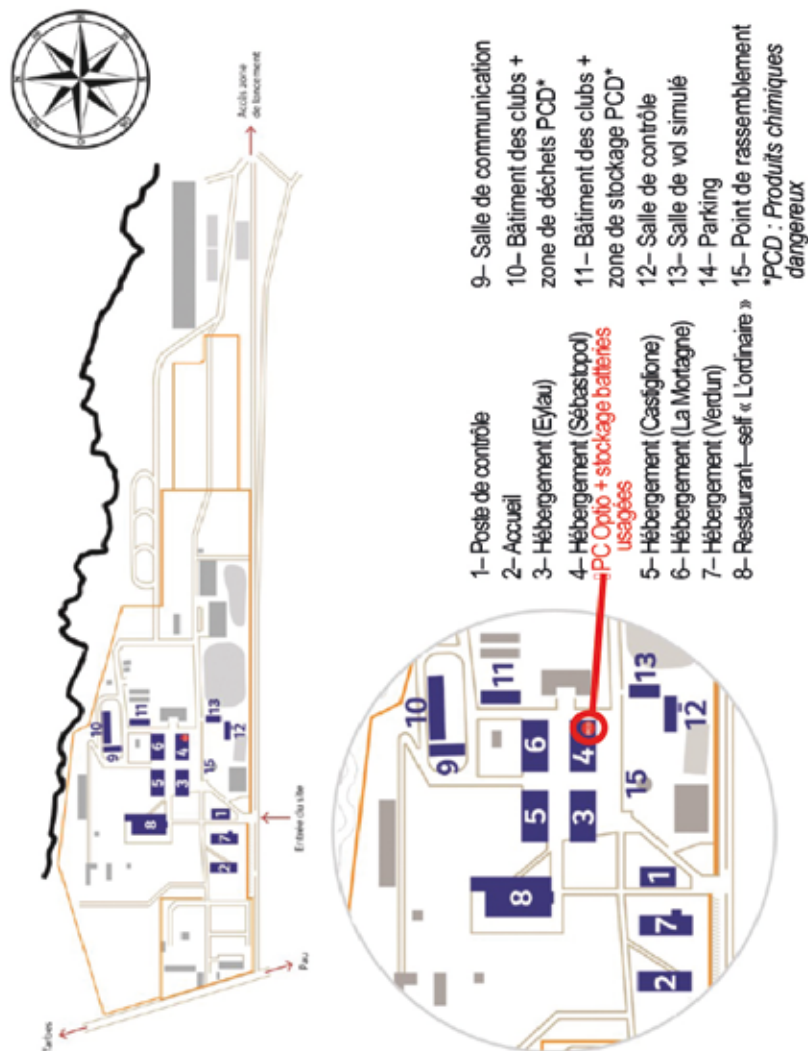


THE MALL E. Leclerc

Route de Pau, 65429 Ibos
05 62 90 62 62



Map of the C'Space base



Emergency phone Number : 18 ou 112



© CNES/PEDOUSSAULT Manuel, 2014



Comment se rendre au camp

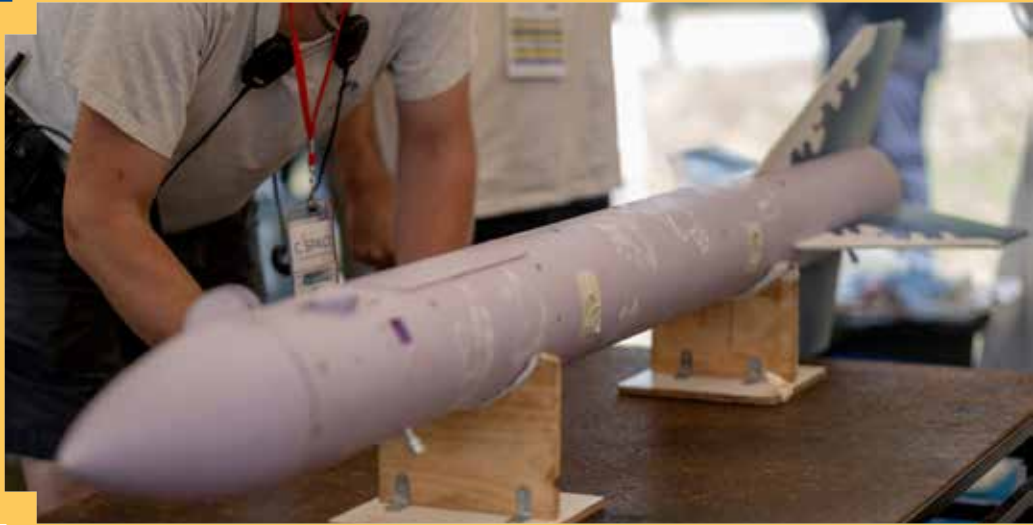
- **From Tarbes :** Direction Ibos (D817) for 8km. The military camp will be on your left, in front of the restaurant named «La Clé d'Or».
- **From Bordeaux (A64) :** Take the Exit 11 (Soumoulou), then drive in the direction of Tarbes (D187) for 12km. The military camp will be on your left, in front of the restaurant named «La Clé d'Or».
- **From Toulouse (A64) :** Exit 12 (Lourdes), after the highway toll take N21 to Tarbes. After the second roundabout, take the direction of Ibos (D187). Go on for 10km, The military camp will be on your left, in front of the restaurant named «La Clé d'Or».



Adresse : Camp de Ger - Quartier Dartencet
Chemin de Bénate
64530 GER

Warning :

To access the military camp you will have to show an ID card.
To those who are foreigners please send us your names, date and place of birth



Notes



Notes





Centre national d'études spatiales

2 place Maurice Quentin
75039 Paris cedex 01 - France
Tél. : +33 (0)1 44 76 75 00

cnes.fr

